

# Energy Efficiency in the Private Sector



**Michelle Stott**  
Housing Development & Policy Officer – Energy

Urban Renewal

**0161 253 6367**

[m.d.stott@bury.gov.uk](mailto:m.d.stott@bury.gov.uk)

**Bury**  
COUNCIL

# Energy Efficiency in the Private Sector

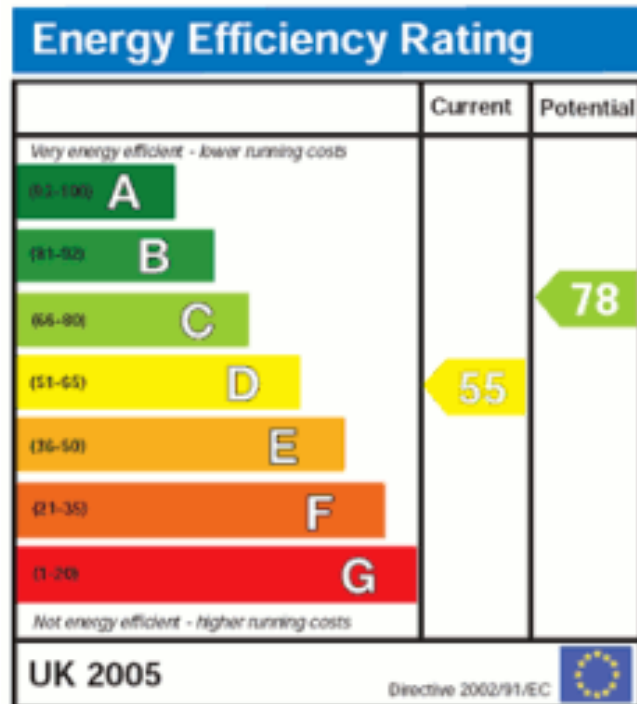
- Current Picture in Bury
- Work previously delivered & achievements
- Future work areas / ambitions



# Improving energy efficiency of housing – its importance



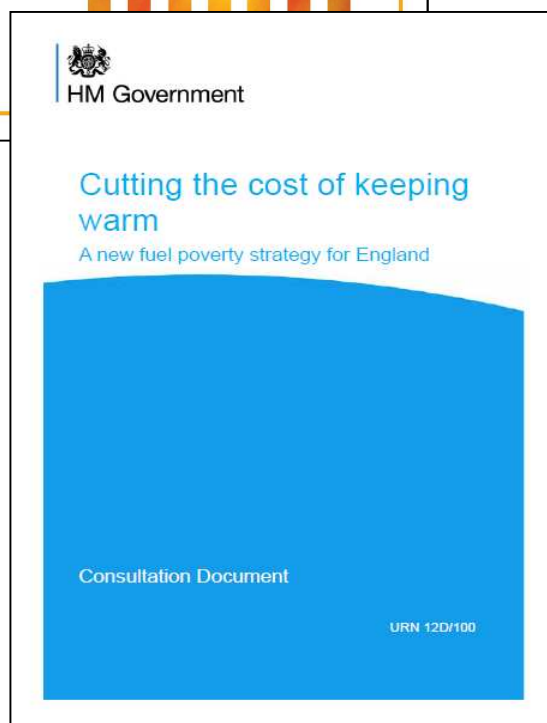
# Housing Energy Improvements – the challenge



- 76% Bury Properties in private sector, includes 6.8% private rented
- High proportion of older properties (61% pre 1964)
- Average EPC rating Band E for private sector properties
- GM Retrofit Strategy
- Private rented sector obligations (Band E Minimum from 2018)



# Fuel Poverty



A household is said to be in fuel poverty if:

- They have required fuel costs that are above average (the national median level)
- Were they to spend that amount they would be left with a residual income below the official poverty line
- **In Bury 8,047 households are in fuel poverty (10.1%)**
- Bury Strategy: 2011- 2016
- Strategy for England:
  - Target and focus on energy improvements
  - Recognition of collaboration and partnerships

# The Health Consequences Of Fuel Poverty

Inadequate room temperatures can cause or exacerbate:

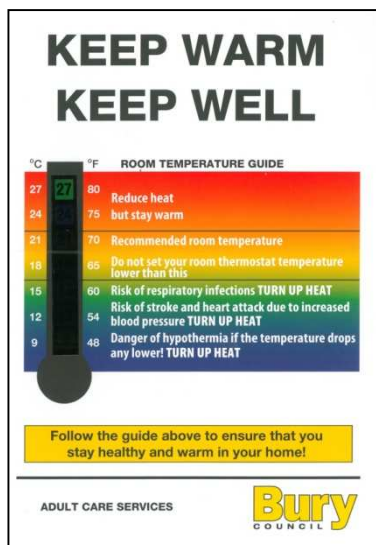
- **Cardiovascular problems**
- **Respiratory infections**
- **Mobility problems & Accidents e.g. falls**
- **Mental health conditions**



Fuel poverty and living in a cold home can lead to excess winter death.

**In Bury there were 130 Excess Winter Deaths in 2012/13**

# Temperature effects on health



	Effects On Health
<b>21°C</b>	<b>Recommended room temperature for vulnerable groups</b>
<b>Below 16°C</b>	<b>Risk of respiratory infections</b>
<b>Below 12°C</b>	<b>Increased blood pressure, risks of stroke and heart attack</b>
<b>Below 9°C</b>	<b>Core body temperature drops and increased cardiovascular problems occur if exposure lasts for more than two hours</b>
<b>5°C</b>	<b>Significant risk of hypothermia</b>

## Ideal room temperatures (World Health Organisation):

Living room	<b>21°C</b>	Kitchen	<b>18°C</b>
Bathroom	<b>22°C</b>	Bedrooms	<b>18°C</b>
Hall / Stairs	<b>16°C</b>		

# Health Costs

There can be significant costs to the NHS for cold related illness e.g. repeat GP visits, A&E admissions due to stroke, heart attack, respiratory and falls. Extra bed days repeat admissions etc.

## Accident and Emergency admissions for cold related health conditions from Apr 2009 – Feb 2011:

Health Condition	Total Number of admissions excluding patient deaths before discharge
Asthma	226
Cardiac Disorders	4204
COPD	630
Falls	163
Stroke	435
<b>Total</b>	<b>5658</b>

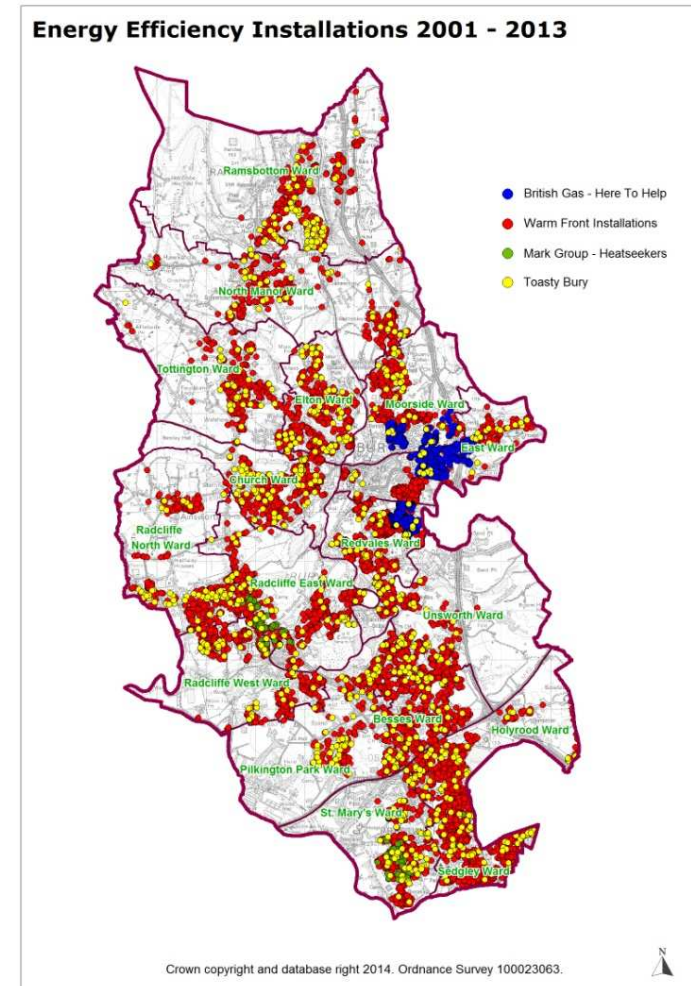


Total cost to the health service for A&E admissions attributable to cold related illness, based on the Department of Health reference costs for this time period is **£11,247,990**.



# Progress to 2014 on energy improvements

- Promotion and facilitation of previous retrofit schemes e.g. Warm Front, Toasty
- Bury Healthy Homes Schemes
- Collective Switch



# Approach going forward post 2014



## Funding sources:

- DECC - £6.1m
- Energy Companies

## Eligibility:

- Postcode
- Benefits
- Township
- Funding gap – Public Health

Advice Service Provision and changes to scheme delivery.....

# Little Bill

## Installs 2014 - 2015

Measure Installed	Total
Boilers	89
Heating Controls	29
Cavity wall insulation	56
Loft Insulation	7
Internal Wall Insulation	4
Room in roof insulation	9
Underfloor insulation	7
External Wall Insulation	15
<b>Total</b>	<b>216</b>

- £280,000 investment
- Resident saving £45,000 annually off Energy Bills.
- Saved 196 tCO<sub>2</sub>



# Next Steps....

- HECA
- Fuel Poverty Strategy for Bury
- Climate Change Plan
- Review of Framework & continue to deliver retrofit measures using funding streams
- Training for Officer to allow for better coordination and risk mitigation of future retrofit works
- Advice provision & Behavioural change
- Data intelligence gathering – possible database

  
**KEEP  
CALM  
AND  
TAKE THE  
NEXT STEP.**

